

BUILD OR BUY PC NEWS

Volume I Issue No. 8

B&B008PC.SAM

July 12, 1995

—PCI bus and Features

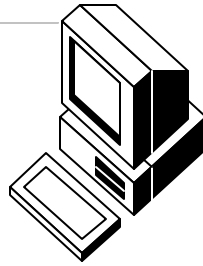
Jointly developed by Intel and other industry leaders, PCI is designed for current and next-generation PCs.

PCI picks up where today's bus architecture leaves off, providing greater system performance via a wider data path and increased expandability.

- w The 82430FX PCIset Product Brief presents the features of the "Triton" chipset.
- w The 82430FX PCIset Product Overview provides a brief technical overview of the 82437FX Triton System Controller, the 82438FX Triton Data Path (TDP), and the 82371FB PCI ISA IDE Xcelerator (PIIX) chips.

The 82430FX PCIset enables the full potential of Pentium® processor-based PC's

- w The 82430FX PCIset architecture enables new levels of performance
- w Optimized architecture includes features such as pipelining, data buffering and smart refresh
- w Supports new memory technologies such as EDO DRAMs and pipelined burst SRAMs
- w Supports 75/90/100 MHz Pentium processors and future proliferations
- w Optimized for Pentium processor and multimedia applications
- w Greater than 100 MB/s PCI data streaming enables Native Signal Processing (NSP) on Pentium processors
- w Integrated 22 MB/s bus master IDE controller
- w Integrated Plug and Play port



Copyright (C) 1995 Intel Corporation Trademark information

Additional information about the PCI bus can be obtained by calling Intel at 1-800-433-5177.

AMD Announces World's Fastest 486 Device—120-MHz

Advanced Micro Devices announces the availability of enhanced members of its Am486® microprocessor family, including a 120-MHz version, the industry's highest performance 486 device.

Personal computers powered by AMD's 120-MHz 486 microprocessor offer performance equivalent to or greater than similarly configured 75-MHz Pentium systems at a lower overall system cost. AMD's new, enhanced 486 products are optimized for the energy-efficient desktop and portable personal computer market segments.

Enhanced AMD 486 Product Features

The new clock-tripled, Microsoft® Windows® compatible processors feature writeback cache memory and 2-pin, industry-standard System Management Mode (SMM). The enhanced Am486 devices support the Windows 95 operating system. "AMD's high performance Am486s, combined with Windows 95, provide a powerful combination for any user," said Carl Stork, director, Windows Hardware Program, Microsoft Corporation.

Members of AMD's enhanced 486 microprocessor family include the "stop-clock/auto halt" feature that allows all CPU activity to be halted, reducing power consumption by more than 3 watts. These power-saving

Mr. Gill Boyd, Speaker / Journalist { CSN News { Email: 74152.604@compuserve.com

Powered by Win95! Powered by Win95! Powered by Win95!

BUILD OR BUY PC NEWS

features allow high-speed microprocessors to be accommodated in today's portable systems without excessive battery drain.